

2020

Sysfilter for Photoshop

USER GUIDE



User Guide

Sysfilter for Photoshop® CC 2020

Version: 7.2.1
Datum: January 04, 2020
Autor: Polmann Team

Copying and publication is expressly prohibited without prior written consent. This information may be subject to changes or updates without specific notice. Copyright by Polmann Services – J. Polmann

1 TABLE OF CONTENTS

1	Table of Contents	2
2	General	5
3	Symbols and Notes	6
4	Installation Requirements.....	7
4.1	Scope of delivery.....	7
4.2	License agreement.....	7
4.3	Installation	8
5	Activate software.....	9
5.1	Evaluate software / Trial version	10
5.2	Registration	10
5.2.1	Purchase software	10
5.2.2	sending the "software code"	11
5.2.3	Activate software.....	11
5.2.4	License transfer (only applicable for activated software).....	12
5.2.5	Renewal of Sysfilter subscription:	13
5.2.6	Convert Sysfilter subscription into permanent license:.....	14
6	Operation	15
6.1	Functions in the main view	15
6.1.1	Selection of drives and directories	16
6.1.2	Selection of file types	16
6.1.3	Selection of the files for export or import process.	17
6.1.4	File processing options.....	18
6.1.5	Operation of the pick lists:.....	19
6.1.6	Change saving location and automatic creation of subfolders	20
6.2	Tab: Export.....	21
6.3	Tab: Import.....	22
6.4	Tab: Concat.....	23
6.4.1	Concatenating and splitting functions.....	24
6.4.2	Concatenate files	25
6.4.3	Split files.....	26
6.5	Tab: PDFs	27
7	Export process	28
7.1	Export results	30
7.2	Translation of the files	31
7.2.1	Export format DOCX, DOC or RTF	31

7.2.2	Notes on the translation of DOCX, DOC or RTF using Trados	31
7.2.3	Tags	32
7.3	Export format XML	33
7.3.1	Tag structure	33
7.3.2	Notes on the translation of the XML files	33
7.3.3	Notes on the translation of XML files using Trados	34
7.4	Known Issues / note on formatting	34
8	Import process.....	35
9	Sysfilter Advanced Settings / Tools.....	36
9.1	"Settings" / 32 and 64 BIT Versions	37
9.2	"Count"	38
9.3	"Export options"	39
9.4	"Import options"	40
9.5	Settings "Global PDF / Source and Target language PDF files"	41
9.6	"Config. file"	42
9.6.1	Sysfilter-Save Settings	43
10	Menu Functions	44
11	Recording of export and import processes in a log file	45
12	Line/word count	45
12.1	Sylfilter text count and calculation function.....	45
13	Tips and Tricks.....	48
13.1	Notes on layout works / DTP:.....	48
13.2	Layers	48
13.2.1	Selective text export of a layer	48
14	Proofreading / Create PDF files	48
15	Instructions Command Line Mode (CL Mode).....	49
15.1	Commands.....	49
15.1.1	Commands for the export process to XML, DOC, DOCX or RTF:.....	49
15.1.2	Commands concerning the import process:.....	50
15.1.3	Commands concerning the concatenation process.....	50
15.1.4	Commands concerning the splitting process.....	51
15.1.5	PDF Creation (Tab: "PDFs")	51
15.1.6	System Tray - Command line mode	51
15.1.7	Sample files / Batch, CMD files	52
15.2	Changing the CONFIG.XML file	54
15.2.1	Modification using the Sysfilter User Interface	54
15.2.2	Altering the configuration file manually.....	54
15.2.3	Default settings	54
15.2.4	Configuration file IN COMMAND line Mode	56
15.3	Running server tasks.....	56
15.3.1	Concerning Sysfilter	56

15.3.2	Concerning Photoshop.....	56
16	Technical Support.....	57
17	Training.....	57
18	New Features.....	58
19	Contact	58
20	Copyright / Trademarks.....	58

2 GENERAL

Sysfilter for Photoshop is a solution for handling the complete translation process of Adobe Photoshop files.

Sysfilter for Photoshop® is an efficient and user-friendly tool. It is the only filter tool worldwide providing 4 different methods of text transfer.

Sysfilter for Photoshop® enables you to transfer texts from your Photoshop files to a word processor of your choice or to XML. After the texts have been edited, they will be automatically reinserted into the original document using the filter.

SYSFILTER FOR PHOTOSHOP®

- Exports texts from Photoshop
- Re-imports texts automatically to the original
- Outputs Photoshop texts into other formats
- Counts characters and lines reliably
- Concatenates any number of files (several files are combined into one file)

Sysfilter can be used for many applications. Translators as well as technical editors and DTP specialists will benefit from its advantages and its versatility. You may use translation memory systems during the translation job without any problems.

At a glance:

TRANSLATION:

- Automatic text transfer to XML, MS Word and other word processors (DOC, DOCX or RTF).
- Translation, spell check, and replacement of terms can be done in one single file.
- The Sysfilter count and calculation function enables you to calculate the translation price quickly.
- Compatible with most popular translation memory systems: Wordfast, Across, Déjà Vu Atril, SDL Trados, Star Transit, MemoQ

TECHNICAL EDITORS:

- Select specific Photoshop layer
- Rename specific Photoshop layer

DESKTOP PUBLISHING/ QUALITY CHECK:

- Automatically replace font
- Merging of individual Photoshop documents to form one PDF file.
- Merging of translated Photoshop documents with the original to form a PDF file.
- The PDF files contain a link to the Photoshop files and can be opened with a single click.

AUTOMATION

- Control via command line

3 SYMBOLS AND NOTES

It was one of our priorities to design this User Manual as clearly arranged as possible.

We have marked notes that are particularly important or useful as follows:



Notes to be observed specifically. Data security, risk of data loss, etc.



Notes to be observed.



Information on the duration of specific processes.



Useful tips for your daily work.

Enjoy reading the User Manual and working with your newly acquired Sysfilter. The users of the test version will also appreciate to read this Manual.

Your Support Team

4 INSTALLATION REQUIREMENTS

To use Sysfilter for Photoshop the following software needs to be installed on your computer and run without problems:

- Adobe Photoshop (CS up to CC 2020) - (32 or 64bit) *
- Recommended operating systems: Windows 7 or 10 *

Sysfilter for Photoshop is for use with Microsoft's Windows operating systems up to version 10.

Programs marked with an asterisk (*) are programs of Microsoft Corporation or Adobe and **not included** in the delivery.

Required disk space: approx. 30 MB

4.1 SCOPE OF DELIVERY

Included within the scope of delivery:

- the file "setup-S4PS.....exe "
- User Guide in PDF format

4.2 LICENSE AGREEMENT

The use of Sysfilter is governed by license agreements. You must read and agree to the license agreement terms before using Sysfilter.

During the installation process the license agreements will appear on your desktop and you will be asked to read and accept them.

4.3 INSTALLATION

Installation is very easy.



If you are an experienced users, just start the setup file and follow the instructions on the screen.



The installation requires administrator rights.

Installation process in detail:

1. Extract "setup-SYS4PHOTOSHOP.....exe "from the ZIP archive.
2. Copy the file "setup-SYS4PHOTOSHOP.....exe" to a folder on your hard disk.
3. Double-click on the file "setup-SYS4PHOTOSHOP.....exe" within your "Windows Explorer" to start the installation process.
4. Select a language. Here you can switch the language of the Sysfilter user interface to your preferred language (German, English or Spanish). The language setting can be changed any time.
5. License Agreements
You will now be asked to accept or decline the license agreements. You will only be able to continue the installation process if you accept the license agreements.
6. Select the target folder. This folder is used to store the installation files.
7. Select the folder for the start menu.
8. Click on 'Complete' and Sysfilter for Photoshop will be started. Using the Windows start menu you can start Sysfilter at any later time.
9. After the start a Welcome Screen will be displayed.

5 ACTIVATE SOFTWARE

The full version of this program is activated with an activation key. A different software code is generated during each installation process. For detailed information about the activation please read the following chapters.



Using the activation key you can install Sysfilter on one computer.

If you buy a full version of Sysfilter we will send you an e-mail with your activation key.

Use the "Info" command in the "?" menu to display the registration status of your software.

If you launch the unregistered version of Sysfilter for Photoshop the activation screen is displayed:



You can select one of the following options:

- Test Software
- Registration
 - 1) Purchase software
 - 2) Please send the "software code" to Polmann Services
 - 3) Activate software
- License transfer (only applicable for activated software)

5.1 EVALUATE SOFTWARE / TRIAL VERSION

You may test Sysfilter during a period of 28 days at no charge and use of all functions. In the upper left corner a counter is displayed, which indicates how long the software can be started in testing mode. After the software is activated, instead of the counter the letter "A" is displayed.



- The trial version permits you to select a maximum of 10 files.
- In the export file, the term "trial version" is inserted.
- Some functions are restricted.

5.2 REGISTRATION

If you want to use the full version without restrictions, please proceed as follows:

5.2.1 PURCHASE SOFTWARE

Click the link "Purchase software" in the activation screen. The link will lead you to the Polmann Services website, where you can find detailed information about how you can order Sysfilter.



Or you can simply purchase Sysfilter by sending us an e-mail or a fax including your order.

e-mail: sales@sysfilter.de

The current contact data is provided on our website.

Be sure to include your name, address, and email address.

Or just order via the Online Shop on our website <http://www.sysfilter.de>

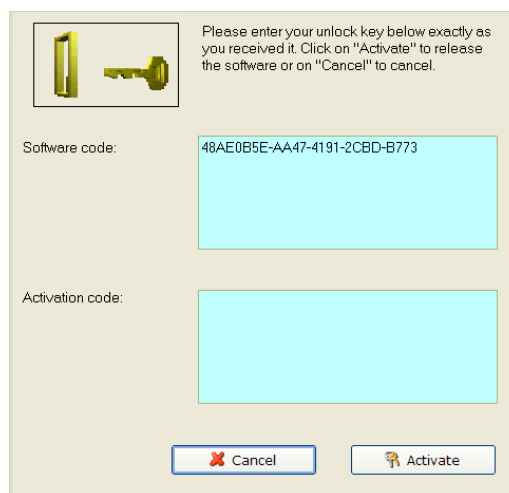
5.2.2 SENDING THE "SOFTWARE CODE"

After you have completed the ordering process, please send us the software code of your Sysfilter installation. Please click on the link "Please send the software code". An e-mail message will open automatically. The software code generated during installation will be displayed in the reference line. Simply send this email to key@polmannservices.com. Alternatively, you can copy the software code manually from the subjacent text field into an e-mail.

5.2.3 ACTIVATE SOFTWARE

After we received your order and your software code, we will send you an activation key within 24 hours (on working days).

For software activation please click the link "**Activate software**" in the activation screen. The following entry box will be displayed.



The image shows a software activation dialog box with a light beige background. At the top left is an icon of a yellow key. To its right, text reads: "Please enter your unlock key below exactly as you received it. Click on 'Activate' to release the software or on 'Cancel' to cancel." Below this, there are two input fields. The first is labeled "Software code:" and contains the text "48AE0B5E-AA47-4191-2CBD-B773". The second is labeled "Activation code:" and is empty. At the bottom, there are two buttons: "Cancel" with a red 'X' icon and "Activate" with a key icon.

Enter the activation key into the field "Activation key" and click on "Activate". A confirmation message will be displayed.



The software is now activated!

After the activation process has been completed without errors, the letter "A" will be displayed in the upper left corner of the activation screen.

5.2.4 LICENSE TRANSFER (ONLY APPLICABLE FOR ACTIVATED SOFTWARE)

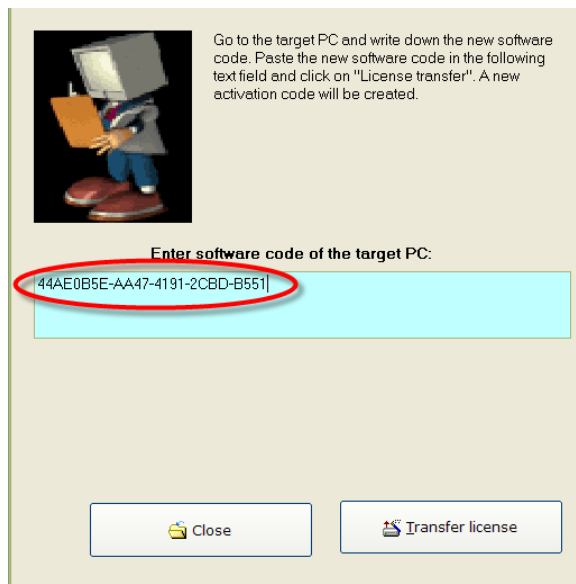
If you want to install and use your already activated Sysfilter software on a new PC you have the possibility to transfer your license.



- If you transfer the license, the activation on your previous computer will be deleted. The software will be changed again into the test mode.
- On the target machine, the same Sysfilter version should be installed. A transfer using different versions is not supported.

To transfer your license proceed as follows:

1. Start the Sysfilter program on your "old" computer.
2. To do so, go to the main menu and click "?" and then "Register software". The activation screen will be displayed.
3. Click the link "Transfer license".
4. Use the field "Enter software code of the target PC:" to enter the software code of the new PC.



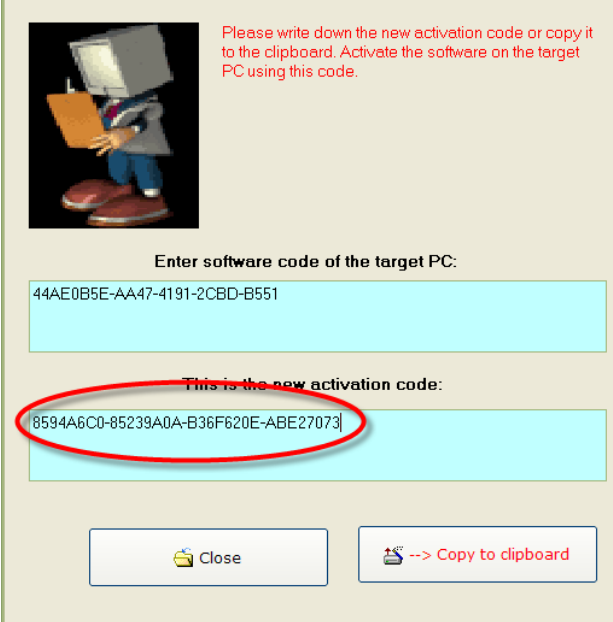
Go to the target PC and write down the new software code. Paste the new software code in the following text field and click on "License transfer". A new activation code will be created.

Enter software code of the target PC:

44AE0B5E-AA47-4191-2CBD-B551

Close Transfer license

5. After that click on the "Transfer license" button.
6. The bottom text field now shows the new activation key.



Please write down the new activation code or copy it to the clipboard. Activate the software on the target PC using this code.

Enter software code of the target PC:

44AE0B5E-AA47-4191-2CBD-B551

~~This is the new activation code:~~

8594A6C0-85239A0A-B36F620E-ABE27073

Close --> Copy to clipboard

7. Use this activation key to activate the software on the target PC. Note down this key or copy it into an e-mail.

5.2.5 RENEWAL OF SYSFILTER SUBSCRIPTION:

To renew your Sysfilter subscription during the subscription period, proceed as follows:

- 1) In the Menu click on "?" --> "Register Software..."
- 2) Click on "Renew Sysfilter subscription"
- 3) Copy the newly released Software Key into a mail which you send to Polmann Services.
We will send you an Activation Key.
- 4) Enter the Activation Key into the bottom field.
- 5) Click on the button "Activate".

--> The Software subscription has been renewed!

5.2.6 CONVERT SYSFILTER SUBSCRIPTION INTO PERMANENT LICENSE:

To convert your Sysfilter subscription into a permanent license during the subscription period, proceed as follows:

- 1) In the Menu click on "?" --> "Register Software..."
- 2) Click on "Renew Sysfilter subscription"
- 3) Copy the newly released Software Key into a mail which you send to Polmann Services.
We will send you an Activation Key.
- 4) Enter the Activation Key into the bottom field.
- 5) Click on the button "Activate".

--> The software subscription has been converted into a permanent license!

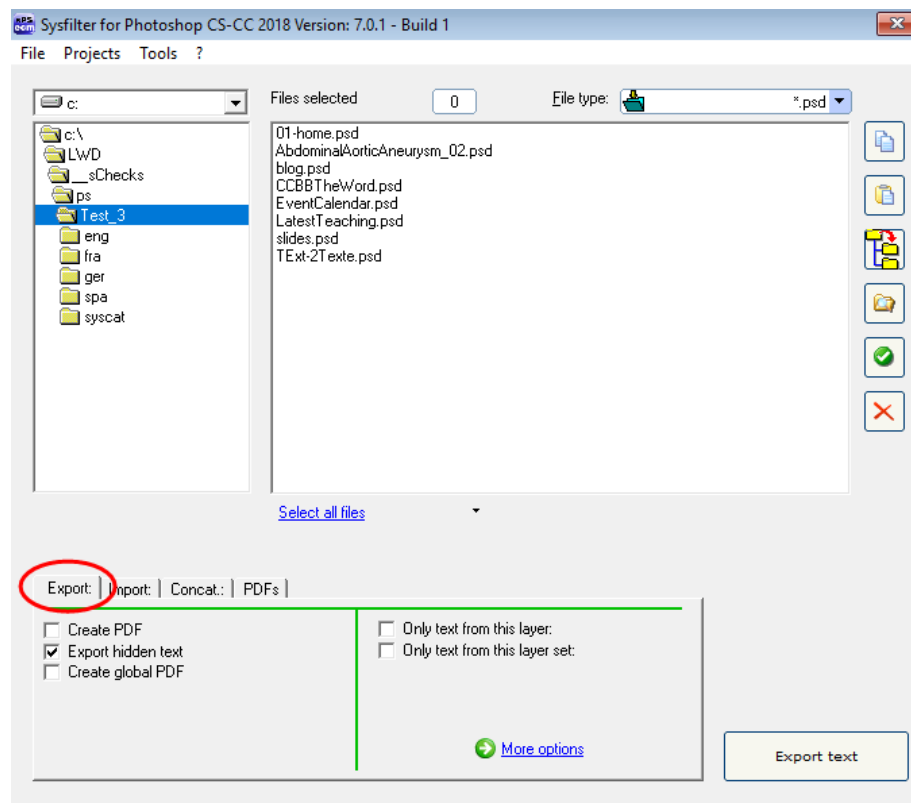
6 OPERATION

The user interface of Sysfilter for Photoshop® is easy to use. Follow your intuition. Sysfilter for Photoshop provides the following functions.

6.1 FUNCTIONS IN THE MAIN VIEW

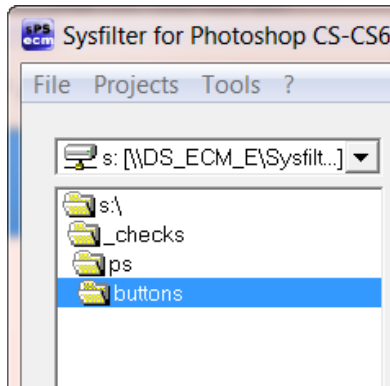
If Sysfilter for Photoshop® is started you will see the main view first with activated "Export" tab (see below left).

Main view with activated export options:



6.1.1 SELECTION OF DRIVES AND DIRECTORIES

Main view, top left

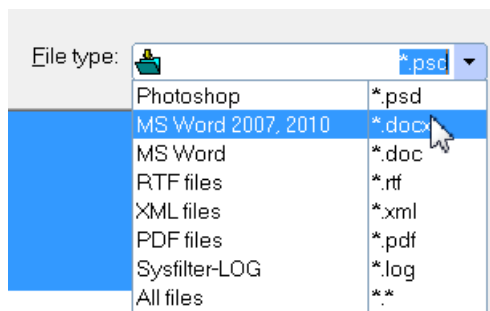


On the top left display you can select the drives and directories which contain the files you want to edit.

6.1.2 SELECTION OF FILE TYPES

By selecting the file type you determine which file or files you want to edit. The following options are possible:

Main view, top right



In addition to the displayed files any other files can be displayed.

Just type another extension in the text box and press "Return".

Wildcards can also be used. For example: * xxx * -> All files which contain "xxx" in the file name will be displayed.

- Before you start the export process click on **Photoshop files (*.psd)**. All PSD files are displayed in the file list.
- Before you start the import process click on ***.docx, *.doc, *.rtf or *.xml**
- Click on **All files (*.*)**. All files in the selected directory are displayed.

6.1.3 SELECTION OF THE FILES FOR EXPORT OR IMPORT PROCESS.

Select the files you want to process. For the export process the desired PSD files. For the import process the desired DOCX, DOC, RTF or XML files.

IN THIS WAY YOU CAN SELECT THE FILES:

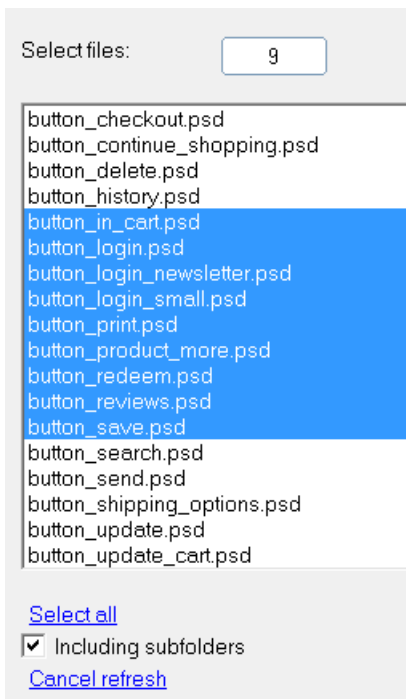
Selection of a single file. Click on the file name to select a single file

Multiple file selection: Click first file, then keep the control key pressed to select more than one file. Continuous file block: Click first file in the block. Scroll to the last file you want in the block, then hold down the shift key and click file.

If you want to edit **all files** in the directory, click on **"Select all"**.

In addition **files from subfolders** can be selected. Activate the check box **"Including subfolders"**. The file list will be updated and now also the files located in subfolders are displayed.

File list (main view, center)



Select files:

- button_checkout.psd
- button_continue_shopping.psd
- button_delete.psd
- button_history.psd
- button_in_cart.psd
- button_login.psd
- button_login_newsletter.psd
- button_login_small.psd
- button_print.psd
- button_product_more.psd
- button_redeem.psd
- button_reviews.psd
- button_save.psd
- button_search.psd
- button_send.psd
- button_shipping_options.psd
- button_update.psd
- button_update_cart.psd

[Select all](#)
☒ Including subfolders
[Cancel refresh](#)

Files from subfolders

Files from subfolders can be selected and edited.

The update process can be cancelled.



The target files are saved during text transfer in the respective folder / subfolder.

6.1.4 FILE PROCESSING OPTIONS



Main view, buttons on the right side

Selected files will be copied.

Files will be pasted from the clipboard into the selected directory.

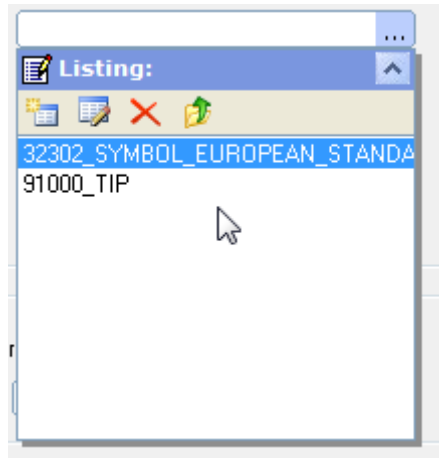
Selected files will be copied to subfolders, and new subfolders will be created (see following Chapter).

Windows Explorer will be opened. The current directory will be selected in the Windows Explorer.

The file list will be updated.

The files are deleted. The program will prompt to confirm the deletion. Please note that the files will be deleted not only in the Sysfilter view, but actually from the applicable directory.

6.1.5 OPERATION OF THE PICK LISTS:



- To open the pick list, click on the 3 dots next to the text box.

Usually there are 4 icons available and the selection list with the appropriate entries.

Meaning of the symbols from left to right:

1. Insert a new entry to the list
2. Edit entry
3. Delete entry
4. Add an entry to the text box.

A list entry can be added to the text box by double-clicking.

The pick list will be closed using the symbol "^".

6.1.6 CHANGE SAVING LOCATION AND AUTOMATIC CREATION OF SUBFOLDERS

Sysfilter for Photoshop® provides the following file management options for the **project management tasks**.

For instance, you need not further manually create a folder for managing different language versions for every language and copy the work files separately to such folder. Sysfilter for Photoshop® will create up to 20 language folders to which it copies the desired files in one operation.

How to proceed:

In the main view click on the button  in the button bar on the right side.

The window "Create subfolders" will open:

The **files selected in the file list** can be copied to another directory.



Window "Create subfolders"

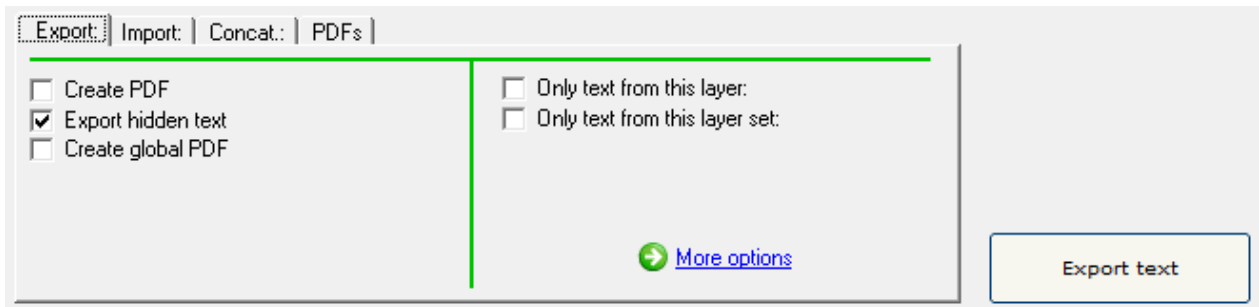
A main folder can be selected.

Up to 20 subfolders may be created.
The files previously selected will be automatically copied to these folders.

To initiate this, activate the applicable check box and enter a folder name.

--> If the files are not to be copied, but only folders to be created, deactivate the box.

6.2 TAB: EXPORT



Several export options are provided:

- **"Create PDF"**: During the export process PDF files of all selected Photoshop files are generated. File size will be kept as small as possible. The PDF files can be used as reference material during translation, proofreading and post layout processes.
- **"Export hidden text"**: If this checkbox is activated hidden texts will be exported as well.
- **"Create global PDF"**: A global PDF file can be created using this function. Using this function the selected documents can be concatenated to one file. The creation of the global PDF file is done during the export or import process.

HOW TO PROCEED:

1. Select and mark files
2. Select the corresponding tab in the main view: "Export", "Import"
3. Enable the check box "Create global PDF".
4. Click on the respective button (export or import).

Location of the file: In the current working directory of the main view,
Name: Global PDF.pdf

Global PDF: Batch settings up to 250 files per PDF, default setting: 120.
(See also in the [option window "Global PDF"](#))

- **"Only text from this layer "**: If activated, only text of selected text layer will be exported. To do this type into the text field the name of the layer you want to export.
- **"Only text from this layer set"**: If activated, only text of selected layer set will be exported. To do this type into the text field the name of the layer set you want to export.

6.3 TAB: IMPORT

Several import options are provided:

- **"Rename layer"**: Here you can rename a layer during the import process. In the upper field enter the name of the layer, which should be renamed. At the bottom enter the new name.
- **"Create PDF"**: PDF files of the selected Photoshop files can be created during import process. File size will be kept as small as possible.
- **"Create PDF (source and target language)"** Using this function, a PDF file can be created which contains original and translated Photoshop documents.

Location of the file: In the current working directory,

Name: AS-ZS-PDF.PDF

- **"Create global PDF"**: A global PDF file can be created using this function. Using this function the selected documents can be concatenated to a single PDF file. The creation of the global PDF file is done during the export or import process.

HOW TO PROCEED:

1. Select and mark files
2. Select the corresponding tab in the main view: "Export", "Import"
3. Enable the check box "Create global PDF".
4. Click on the respective button (export or import).

Location of the file: In the current working directory of the main view,
Name: Global-PDF.pdf

Global PDF: Batch settings up to 250 files per PDF, default setting: 120.



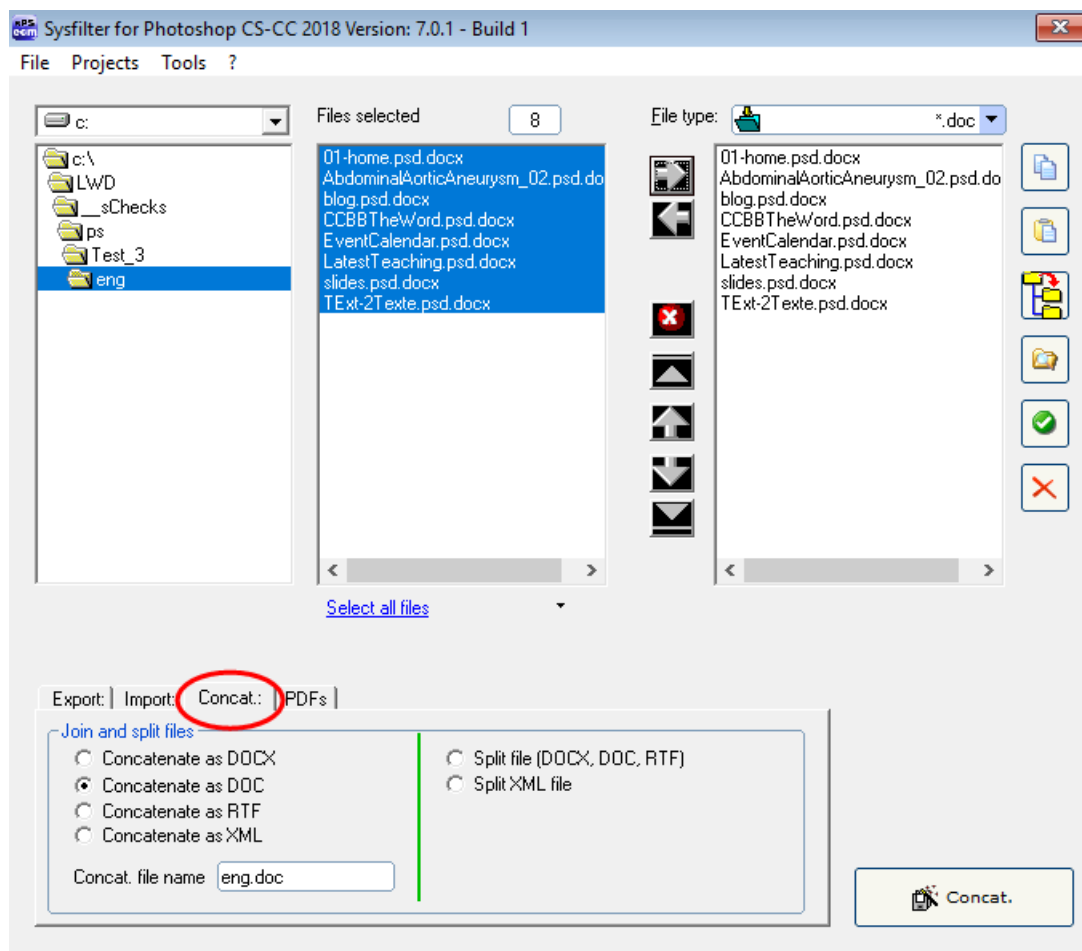
- The PDF files can be used as reference material during translation, proofreading and post layout processes.
- The Photoshop files can be launched from the PDF file. Simply click on the appropriate links in the PDF files.

6.4 TAB: CONCAT.

These functions enable you to concatenate the exported files into one single DOCX, DOC, RTF or XML file or into several batches and to split them again after translation.



This time-saving solution is especially valuable for editors or translators working on projects with large file numbers. It is no longer necessary to open and close hundreds of files. Translation, spell check or replacement of terms can be done in one single file.










[Main view, "Concat." tab: "]

6.4.1 CONCATENATING AND SPLITTING FUNCTIONS

1. **Selection of drive and directories.** File concatenation: Select the directory where the files you want to concatenate are located. Split: Select the directory where the concatenated file is located.
2. **File list left:** File selection. By default all files in the actual folder are selected, but it is also possible to specify individual files within that folder.
 - Click on the file name to select an individual file.
 - **Multiple file selection:** Click first file, then keep the control key pressed to select more than one file. Continuous file block: Click first file in the block. Scroll to the last file you want in the block, then hold down the shift key and click file.
3. **File list, right:** All files in the right-hand list box will be concatenated or split, no matter if they are highlighted or not. In this connection, it is irrelevant whether the files have been selected or not.

FUNCTION OF THE BUTTONS:

	Include files to right-hand list box.
	Remove files from right-hand list box.
	Remove all files from right-hand list box. The files are not deleted, only removed from the list box.
	Move selected entry to the uppermost position.
	Move down selected entry (one position).
	Move down selected entry (one position).
	Move selected entry to the lowermost position.

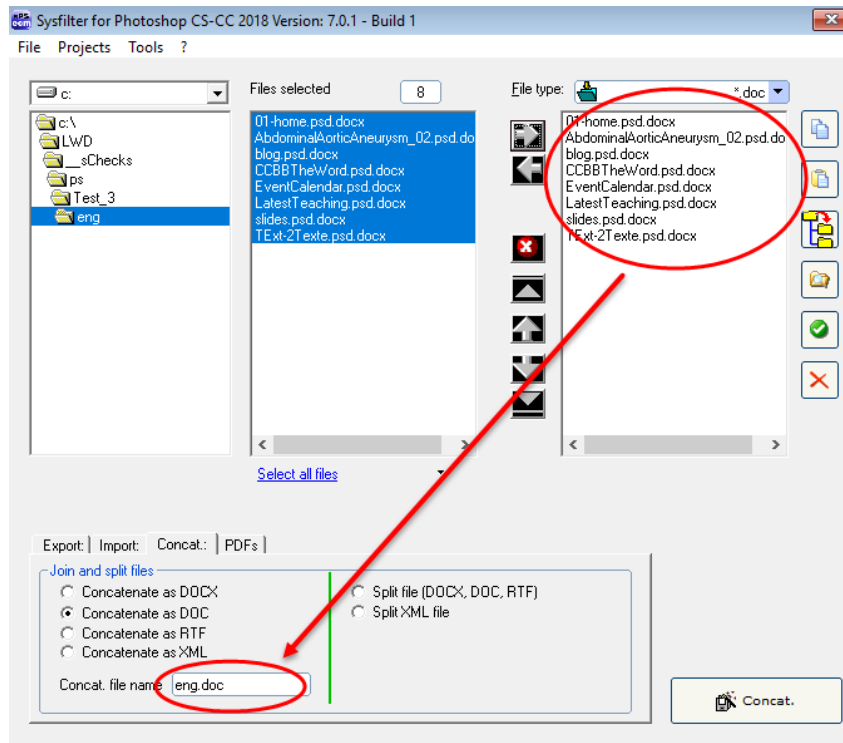
Move highlighted files using the mouse:

Click one entry you want to move, and then hold down the shift key while selecting further files. Continue to hold down the shift key and drag the selected files upwards or downwards in the list.

6.4.2 CONCATENATE FILES

HOW TO PROCEED:

1. Select tab page **"Concat."**
2. Option: **Select "Concatenate as DOCX", "Concatenate as DOC", "Concatenate as RTF" or "Concatenate as XML".**



3. Move the files you want to concatenate to the right-hand list box
Use [function buttons](#) to change file order if necessary. The sorting order of the files in the right-hand list box defines the file order of the resulting collective file.
4. You can change the file name of the resulting collective file here
5. Click on the "Concat." button.



A subfolder named "Syscat" will be created in the current folder and the generated file will be saved in this folder. The current directory name is proposed as file name.

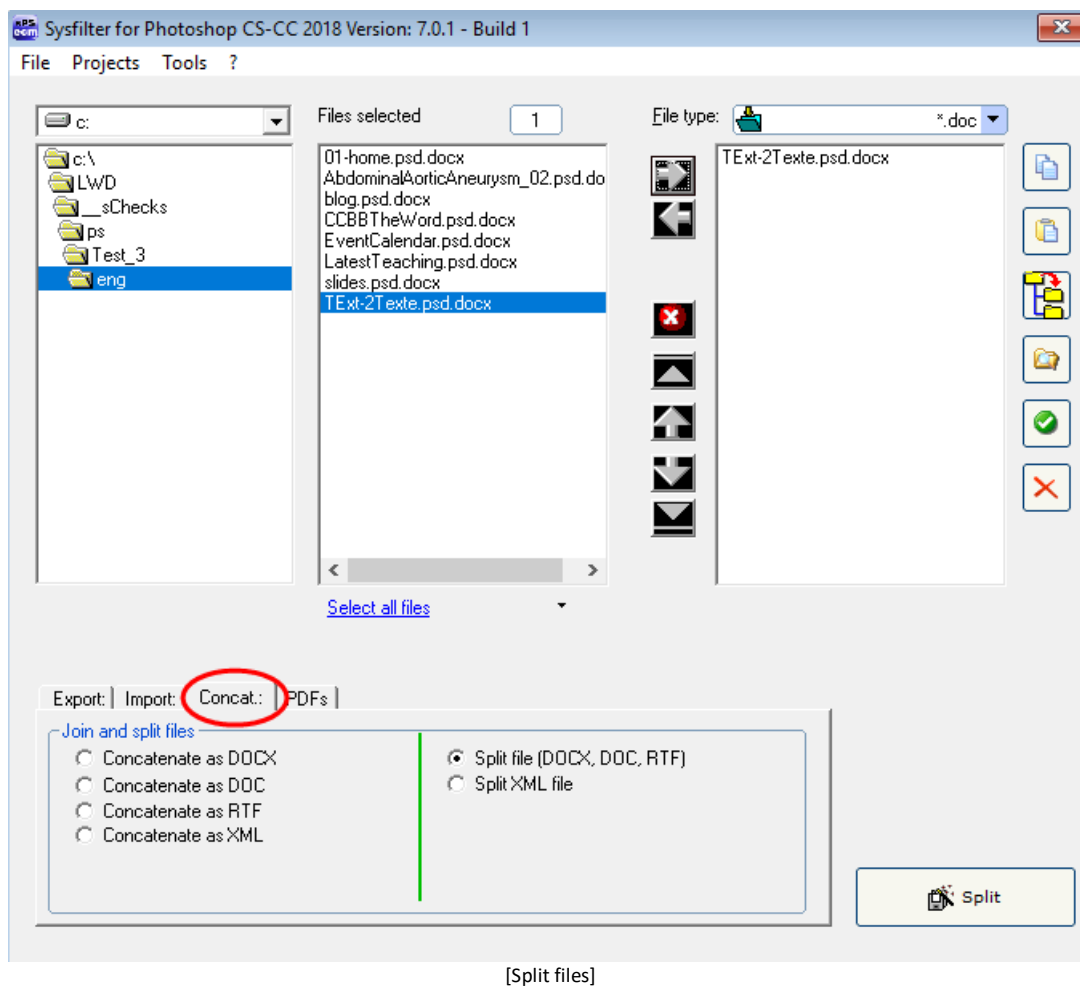


Make the concatenated files appear in the batch file in the most meaningful order for your translation project.

6.4.3 SPLIT FILES

HOW TO PROCEED:

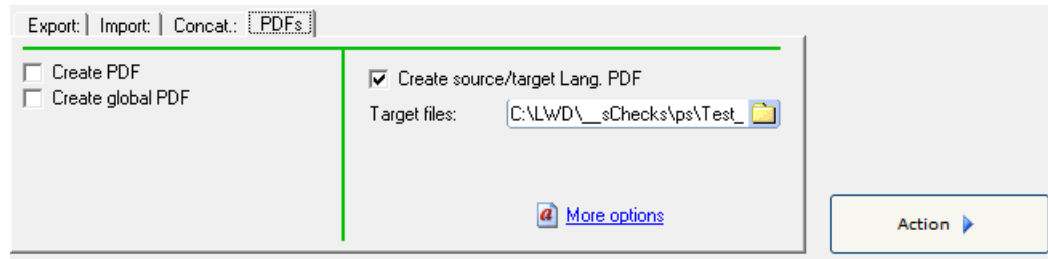
1. Select "Syscat:" tab
2. Option: Select "**Split file (DOCX, DOC, RTF)**" or "**Split XML file**".
3. Move desired files to the right-hand list box.
4. Click the "**Split**" button.



The files will be split and the resulting files are saved into the selected folder.

6.5 TAB: PDFS

Using the "PDFs" tab either single or concatenated PDF files can be created.



For this purpose

- select the desired files,
- activate the appropriate check box and fill in the text fields,
- and click on "Action".

The following options are available:

- **"Create PDF"**: PDF files of selected Photoshop files are generated. File size will be kept as small as possible. Make any other settings in the options window **PDF Save Options**.
- **"Create global PDF"**: A global PDF file can be created using this function. Using this function the selected documents can be concatenated to a single PDF file.



Location of the file: In the current working directory of the main view,
Name: Global-PDF.pdf

Global PDF: Batch settings up to 250 files per PDF, default setting: 120.

- **"Create PDF (source and target language)"**: Using this function, a PDF file can be created which contains original and translated Photoshop documents.



Select in the main view the corresponding PSD files. Enter in the field **"Target files"** the folder with the translated PSD files. A file is created containing the source language and target language files.

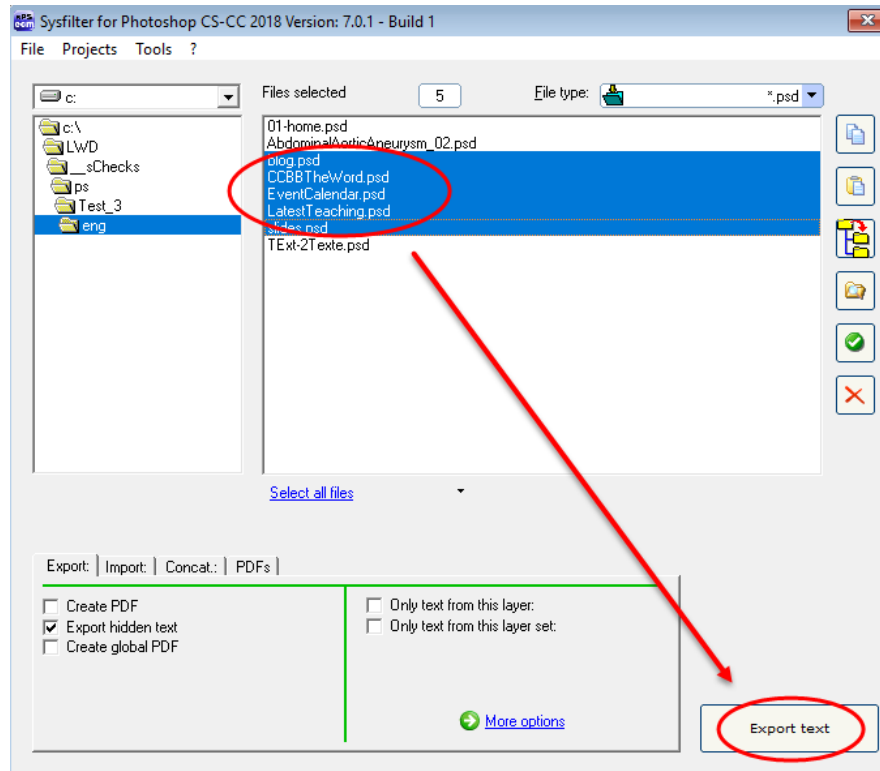
Location of the file: In the current working directory of the main view,
Name: AS-ZS-PDF.PDF



The PDF files can be used as reference material during translation, proofreading and post layout processes.

7 EXPORT PROCESS

Sysfilter for Photoshop® exports and imports all texts from Photoshop files.



Main view, "Export" tab

HOW TO PROCEED:

- Select the folder in which the Photoshop CS files are located. The Photoshop files will appear.
- Select "Photoshop-files (*.psd)" in the drop down combo box in the right corner.
- Click on "**More options**" -> "**Settings**" -> "**Format of the export file**" if you want to export text from Photoshop as DOCX, DOC, RTF or XML file.
- If you want to export the text of a certain layer, activate the check box "Only text from this layer" and enter the desired layer name. Check the box "and their sublayers" if you want to include the sublayers.
- **Highlight the Photoshop CS files which contain texts you want to export. Click onto the "Export text" button to launch the export process.**



The progress bar appears now and the export process can be monitored. **Photoshop will be started in the background.** During export process you can minimize the Sysfilter window.

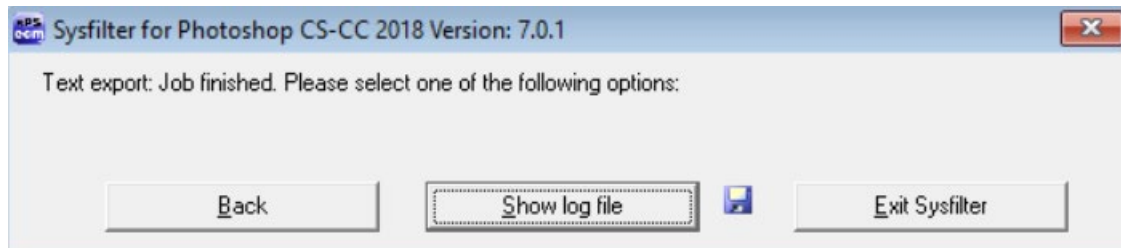


To avoid possible side effects, we recommend that you do not work on your computer during the importing and exporting process.

If you already did an export process of a certain project and run a second export process Sysfilter for Photoshop will overwrite the existing files in this folder. Please make sure that you really want to overwrite the existing files before launching a second exporting process!

You should NEVER use your original files for import or export processing, only copies.
Take your time to save the original files and your translated files in a separate folder!

After the export the following dialog appears:



Back to main menu

LOG file is displayed.
Information about version, file
number and settings.

Quit Sysfilter



There are additional options available for the export process. These can be found at: **Tools >> Options ... >> Export options**. See also under chapter 9: **Sysfilter Advanced Settings / Tools**

7.1 EXPORT RESULTS

The exported files are now in the same folder as the Photoshop files.

The name of the export files consists of the name of the Photoshop files including the file extension "psd" and "doc", "docx", "rtf" or "xml".

EXAMPLE: PHOTOSHOP FILE NAMED "NAME.PSD"

File name (Photoshop)	Export option:	Export file name
Name .psd	-> Standard settings	Name.psd.docx Name.psd.doc Name.psd.rtf or Name.psd.xml
	-> "Create PDF"	Name.pdf
	-> "Create file for count" (Only when DOCX, DOC or RTF were chosen as export format)	Count_ Name.psd.rtf
	-> Global PDF	Global-PDF1.pdf
	A LOG file will be created automatically.	Sysfilter4Photoshop-Export.LOG

7.2 TRANSLATION OF THE FILES

7.2.1 EXPORT FORMAT DOCX, DOC OR RTF

The texts can be translated in **Microsoft Word** or other **text editors**. It is also possible to translate the texts using **translation tools**.



The files can be translated directly with the translation tool **SDL Trados** using MS Word without further pre-processing. Texts that must not be edited or translated are formatted as "tw4winexternal".

7.2.2 NOTES ON THE TRANSLATION OF DOCX, DOC OR RTF USING TRADOS



When the files are opened directly using TagEditor or the translation editor in SDL Trados Studio, undesired side effects may occur. It is possible that the formatting will be displayed incorrectly. To prevent this, we recommend the following practices:

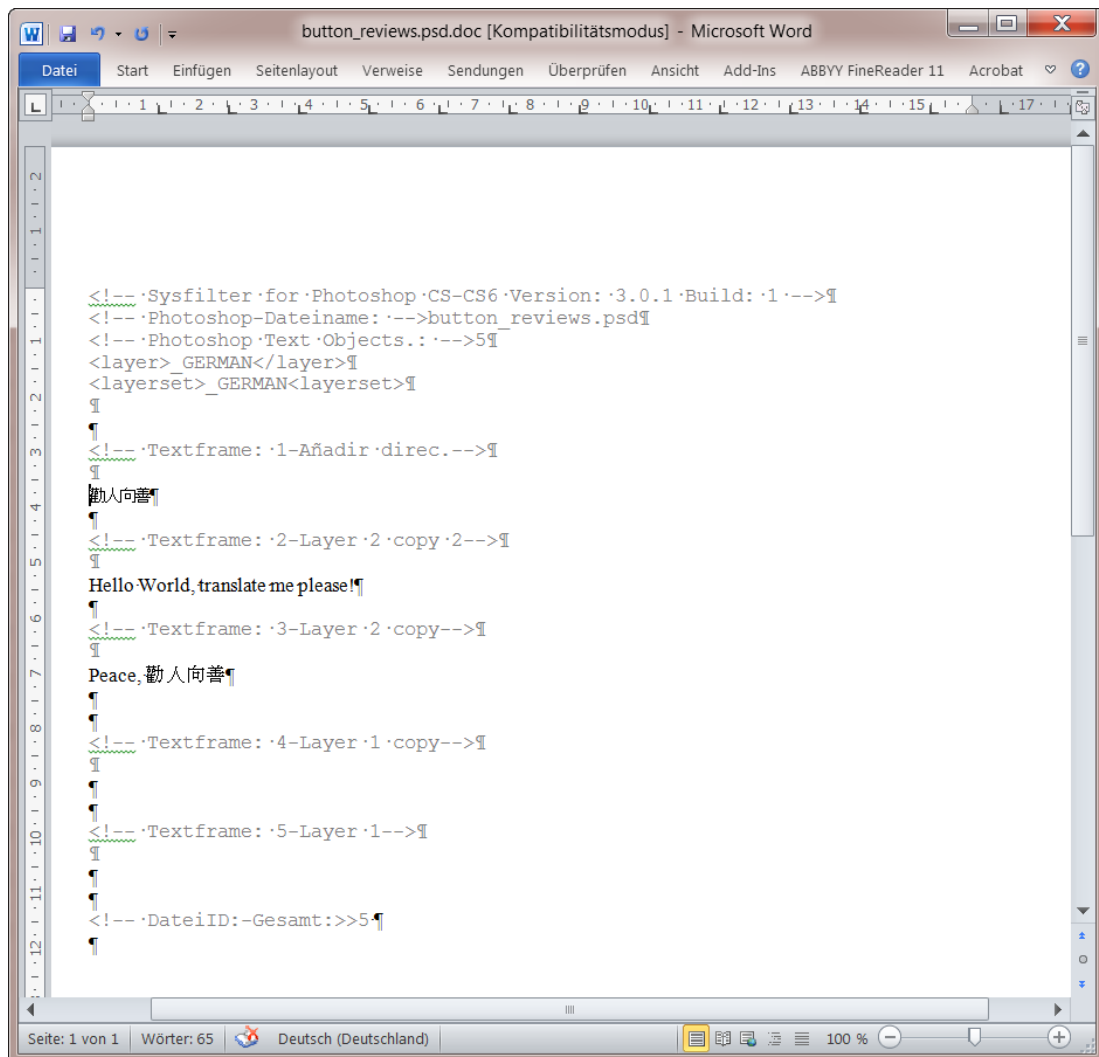
USING THE TAGEDITOR:

For TTX creation, we recommend to choose the translation function of the workbench. (Activate the check box **Tools→ Translate... → Options → Translation Memory Options... → "TRADOS tag XML Workflow for Workbench"**)

USING SDL TRADOS STUDIO:

- A project should be created for the translation and the translation should be done in the SDLXLIFF files.

7.2.3 TAGS



Please make sure that you don't change, delete or move the texts that are formatted in grey (filter information), otherwise errors will occur during the import process after translation. The filtering information is formatted as "tw4winExternal" and encapsulated between "<!--" and "-->".

7.3 EXPORT FORMAT XML

The files are saved in UTF8 format. These files can be translated using an XML editor or the Translation Tool of our choice.

7.3.1 TAG STRUCTURE

The texts to be translated are located in the **<text>** tag a child tag of the <Textframe>element.

7.3.2 NOTES ON THE TRANSLATION OF THE XML FILES



Elements (start and end tags) that are located within the <text> element, may be moved within the <text> element. For example: tag <p>.



Applies to elements that do not contain text to be translated: Please make sure that you don't change or delete the XML tags, otherwise errors will occur during the import process.



It is more difficult to translate tagged files. A PDF file of the Photoshop document may be used as a reference file during the translation process.

That is how the exported XML files look like, if opened using a text editor:

```
<?xml version="1.0" encoding="utf-8" ?>
<syscatXML>
  <AICS2File>
    <Application>Sysfilter für Photoshop CS-CS6 Version: 3.0.1 Build: 1</Application>
    <RemApplicationN>Adobe Photoshop</RemApplicationN>
    <RemApplicationV>13.0.0</RemApplicationV>
    <Filename>button_delete.psd</Filename>
    <Exporttyp>xml</Exporttyp>
    <numTF>5</numTF>
    <onlylayer>_GERMAN</onlylayer>
    <Textframe TfId="1">
      <layer>Text</layer>
      <text>
        <p>Nescis mi fili, quantilla prudentis mundus regatur</p>
      </text>
    </Textframe>
    <Textframe TfId="2">
      <layer>Layer 2 copy 2</layer>
      <text>
        <p>Translate me please!</p>
      </text>
    </Textframe>
    <Textframe TfId="3">
      <layer>Layer 2 copy</layer>
      <text>
        <p></p>
      </text>
    </Textframe>
    <Textframe TfId="4">
      <layer>Layer 1 copy</layer>
      <text>
        <p>In necessariis unitas, in dubiis libertas, in omnibus caritas</p>
      </text>
    </Textframe>
    <Textframe TfId="5">
      <layer>Layer 1</layer>
      <text>
        <p>hello</p>
      </text>
    </Textframe>
  </AICS2File>
</syscatXML>
```

7.3.3 NOTES ON THE TRANSLATION OF XML FILES USING TRADOS



Our download area provides an INI file for the Translation Tool SDL Trados. Or simply request by e-mail: <mailto:support@sysfilter.de>

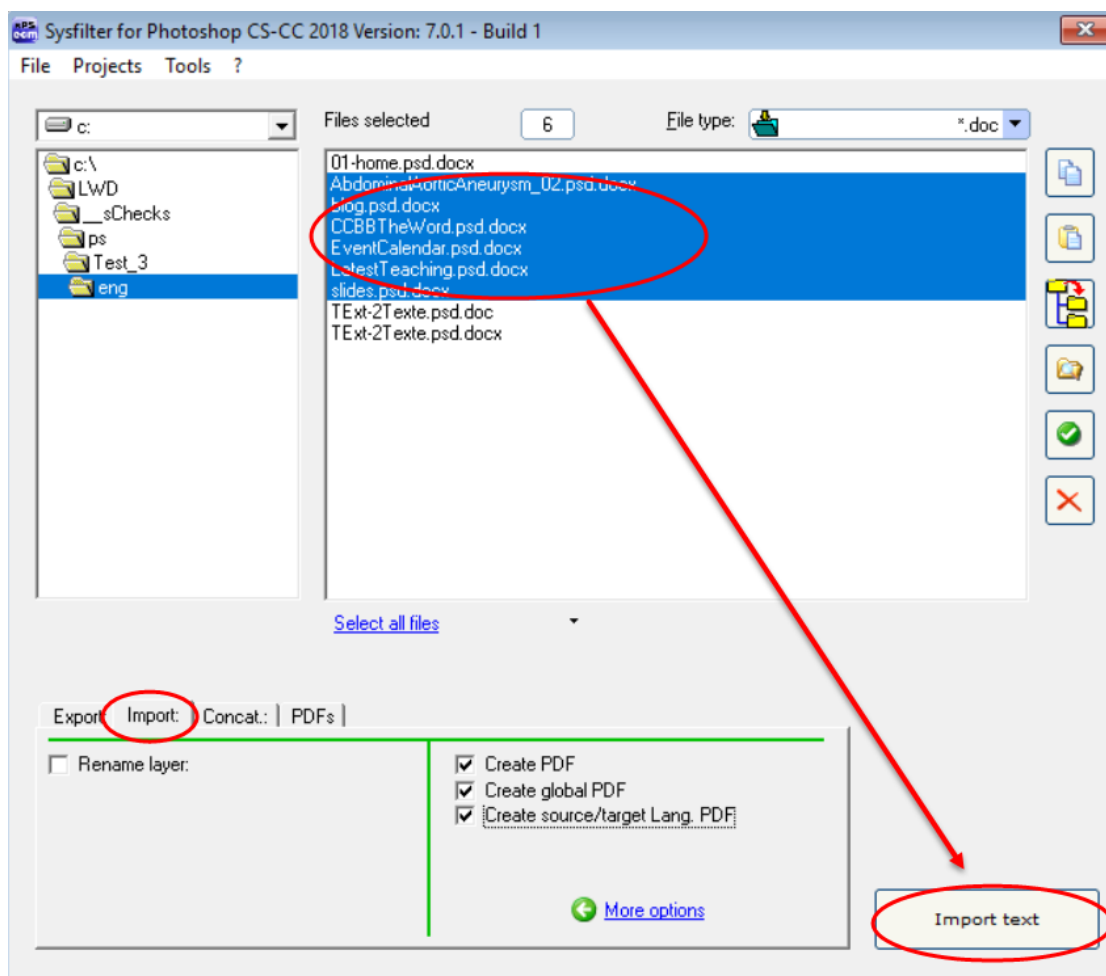
7.4 KNOWN ISSUES / NOTE ON FORMATTING

Mixed formatting within a text object is not supported using text transfer options of Sysfilter for Photoshop. The text formatting of the first character is applied to the whole text object.

8 IMPORT PROCESS

HOW TO PROCEED:

- Select the folder in which the translated files are located. The Photoshop files will appear.
- Select ***.docx**, ***.doc**, ***.rtf** or ***.xml** in the combo box in the right corner at the top.
- Select the import options you want.
- **Highlight the files which contain the translations. Click onto the "Import text" button to launch the importing process.**



The progress bar appears now and the import process can be monitored. **Photoshop will be started in the background.** During the import process you can minimize the Sysfilter window.

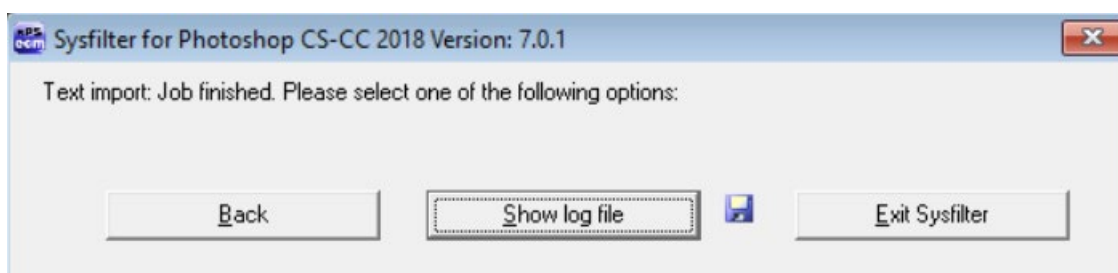


To avoid possible side effects, we recommend that you do not work on your computer during the importing and exporting process.

If you already did an import process of a certain project and run a second import process Sysfilter for Photoshop will overwrite the existing files in this folder. Please make sure that you really want to overwrite the existing files before launching a second exporting process!

You should NEVER use your original files for import or export processing, only copies. Take your time to save the original files and your translated files in a separate folder!

After the import the following dialog appears:



Back to main menu

LOG file is displayed.
Information about version,
file number and settings.

Quit Sysfilter



The Photoshop files now contain the translated texts.



There are additional save and import options available for the import process. These can be found at: **Tools >> Options... >> Save options or import options. See also under chapter: Sysfilter Advanced Settings / Tools**



Remember that automated filter processes require layout control and, depending on the file structure, post layout.



PROOFREADING / CREATE PDF FILES

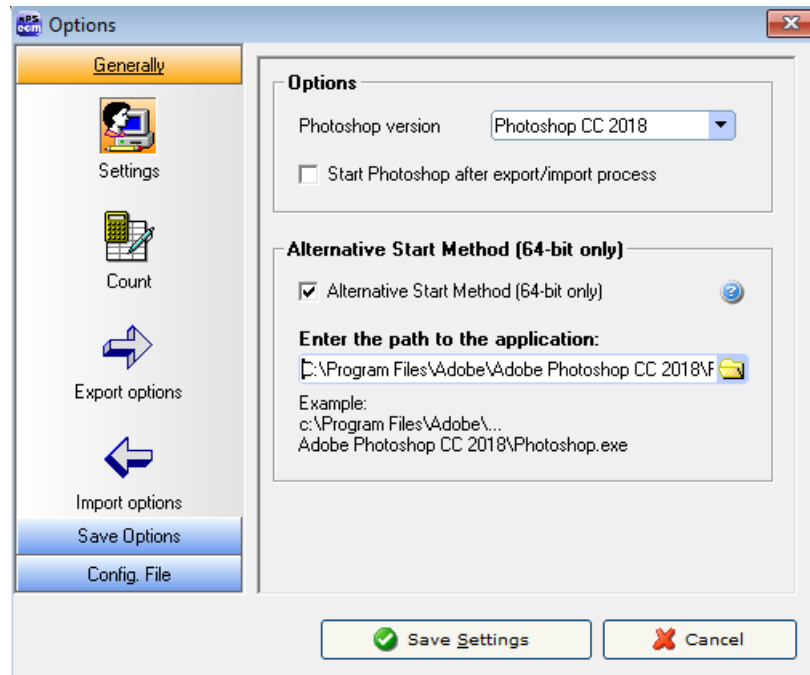
During export and import process you can automatically create PDF files. **The PDF files can be used as reference material for translation, proofreading or layout control.**

How to activate the option window:

Click on **"More options"** in the applicable tab

or click on the menu **"Tools" → "Options..."**.

9.1 "SETTINGS" / 32 AND 64 BIT VERSIONS



- **"Photoshop version"**

Sysfilter for Photoshop supports different versions of Adobe Photoshop. Select the desired Photoshop version from the combo box.

- **"Activate Photoshop quick start"**

If Sysfilter accesses to Adobe Photoshop, Adobe Photoshop is usually closed after the access has been made. With this option enabled, Adobe Photoshop remains open.

- **"Alternative Start method"**

Select this check box if Photoshop does not start automatically. Enter the path to the 64-bit version of Photoshop. Sysfilter attempts to establish an alternative connection to Photoshop.



The corresponding Photoshop version must be installed on your system.



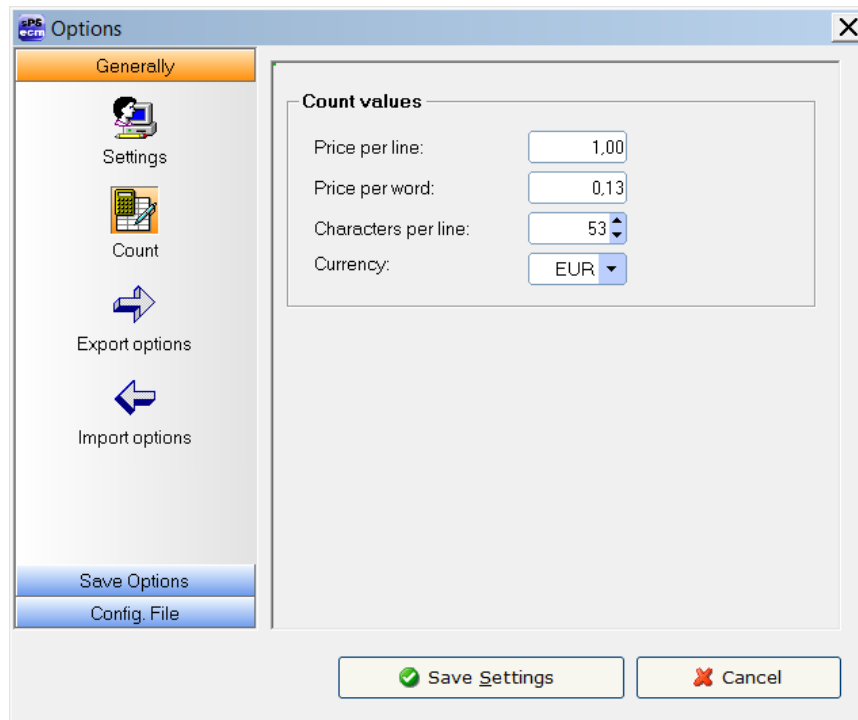
The default path to **Photoshop CS6 (64 bit)** is:

C:\Program Files\Adobe\Adobe Photoshop **CS6** (64 Bit)\Photoshop.exe

The default path to **Photoshop CC (64 bit)** is:

C:\Program Files\Adobe\Adobe Photoshop **CC 2019** \Photoshop.exe

9.2 "COUNT"

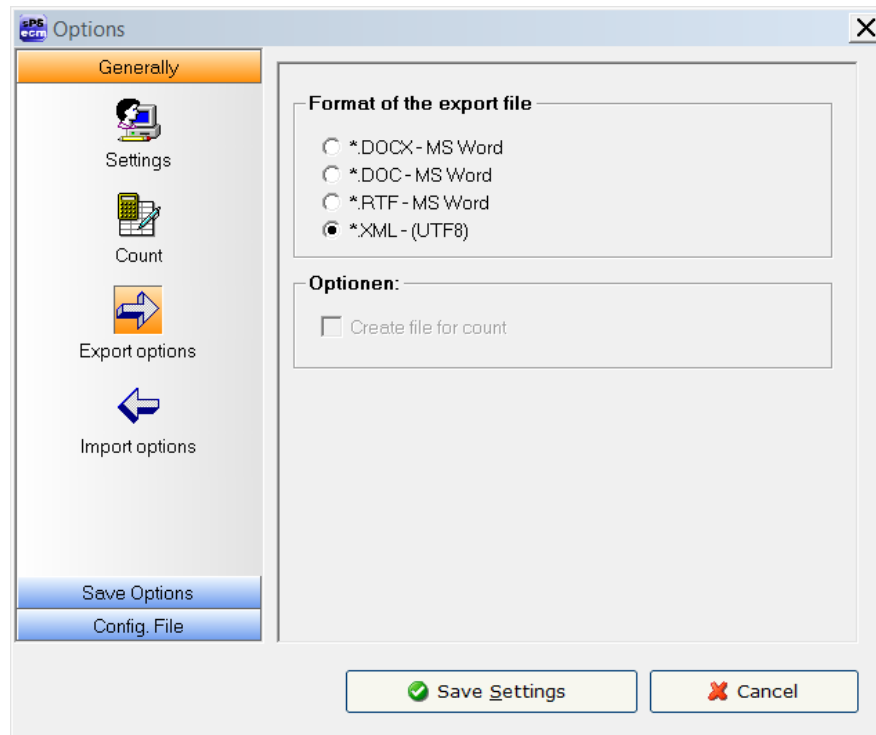


- Modify the settings of word count and price calculation according to your needs
- The LOG file contains information about the export process, the total character number, the number of lines (53 characters per line) and number of words.



During export/import the counting and calculation information is written into the LOG file. To view the LOG file click onto "Show LOG file".

9.3 "EXPORT OPTIONS"



- Format of the export file

"Format of the export file": Here you have the option to specify the format of the export file. You have the following choices:

- | | |
|---|---|
| <input checked="" type="radio"/> *.DOCX - MS Word | Output format: DOCX |
| <input type="radio"/> *.DOC - MS Word | Output format: DOC |
| <input type="radio"/> *.RTF - MS Word | Output format: RTF |
| <input checked="" type="radio"/> *.XML (UTF8) | Output format: XML, Unicode (UTF8) format |

- **"Create file for count"** - A count file without tags is generated, which you can use for counting with your usual counting tool. You can use this file to determine the number of lines, characters or words using your customary character counting program.

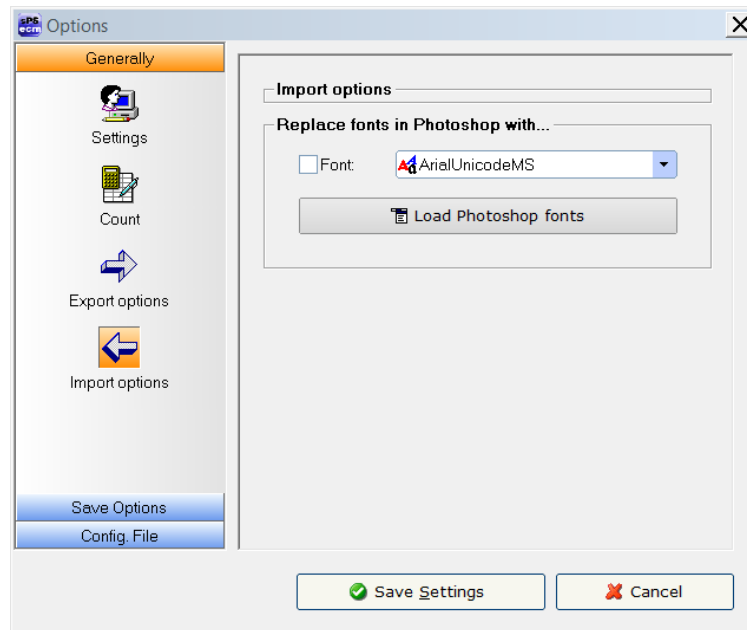


You should never use count files for translation.



After the export the count files will be located in the same folder as the Photoshop files. File name of count files: "count_dateiname.rtf".

9.4 "IMPORT OPTIONS"



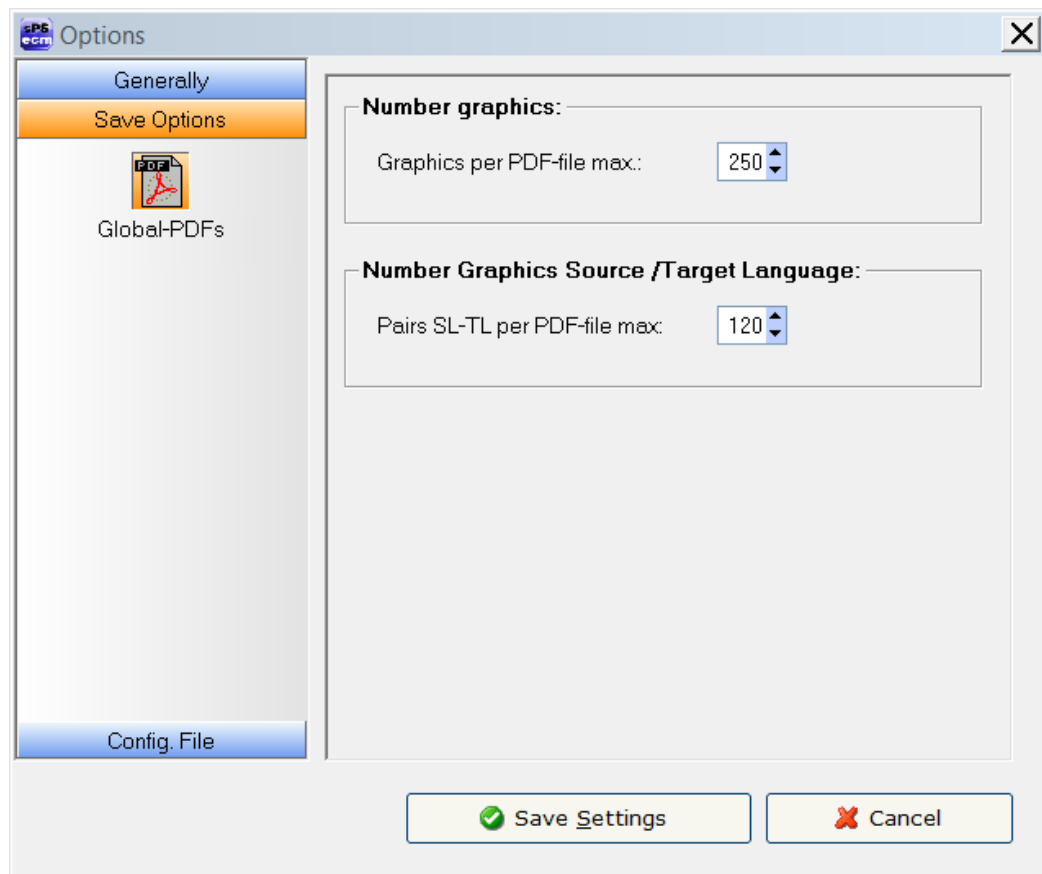
- "Replace fonts in Photoshop with..."

Activate the check box and select the target font. The fonts of the Photoshop text frame will be replaced with the selected font when performing the import process.



Once you click on "Load Photoshop fonts" the Photoshop fonts are loaded automatically to the pick lists. This may take a few seconds at the first loading.

9.5 SETTINGS "GLOBAL PDF / SOURCE AND TARGET LANGUAGE PDF FILES"



- Changing the value of the box in the **"Number of graphics"** frame enables you to combine up to 250 files into a single PDF. The default setting is 120.
- Changing the value of the box in the **"Number Graphics Source / Target Language"** frame enables you to combine up to 120 files into a single PDF. The default setting is 60.

9.6 "CONFIG. FILE"

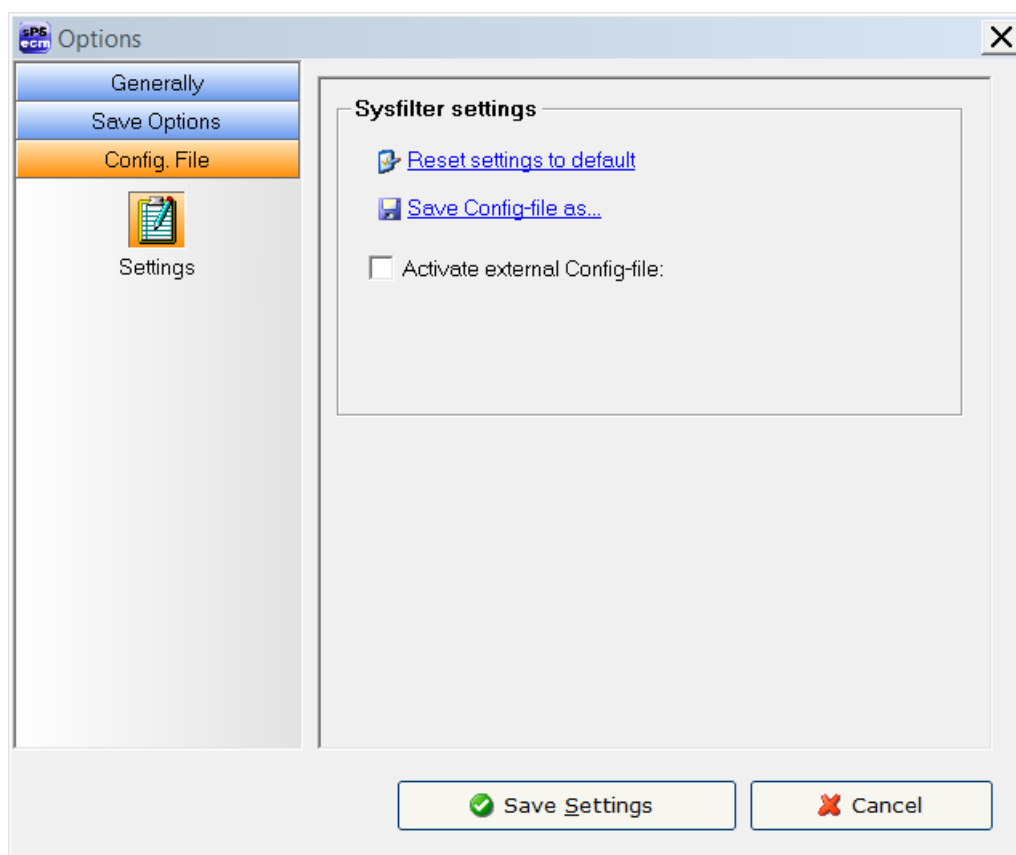
Here you can save and load the Sysfilter settings or restore the default settings.

The settings are stored in a file under the name Config.XML.

The set Sysfilter options are stored in the file "Config.XML".

This configuration file is a XML file that is stored in UTF8 format.

It is located by default in the **application path** of the filter or in the folder "c:\Users\Public\Documents\Sysfilter\PhotoshopCS2-6\config.xml".

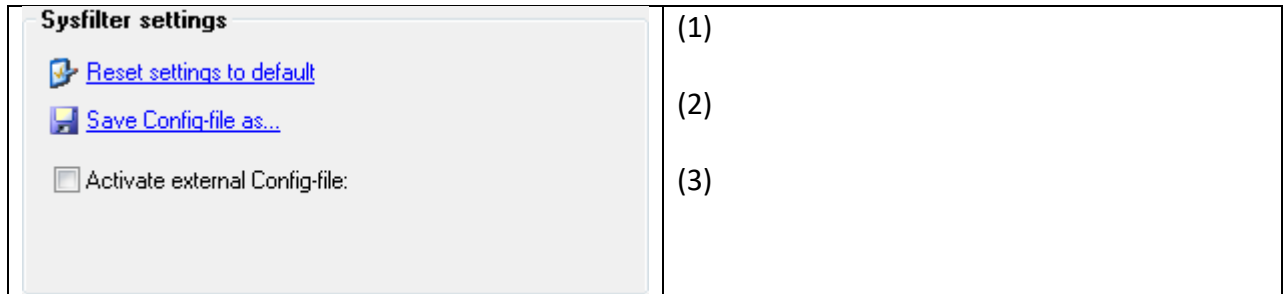


The user interface of Sysfilter permits to change and store the set options in the configuration file:

How to proceed:

1. Change desired options in the options area or in the main view.
2. Menu item: Select "Tools" --> "Options..."
3. Click on "OK".

9.6.1 SYSFILTER-SAVE SETTINGS



(1) The XML configuration file may be stored at another location.

(2) To restore the standard settings, click on "**Reset settings to default**".

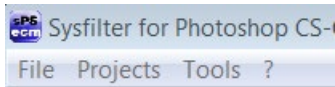
(3) **External configuration file is activated.** Whenever the program starts, Sysfilter will automatically load the external configuration file, whenever this check box is activated.



The external configuration file may, for instance, be located on a network drive and used by several users.

To prevent changes to the configuration file, the configuration file can be set read-only.

10 MENU FUNCTIONS



- **File → Quit**
- **Projects →** Saves the path settings of the last 8 filtering projects. A time-consuming search for the preceding projects on your hard disk is not necessary. Just select your project from the project list to get to the directory you want.
- **Tools → Language.** Here you can switch the language (English, German and Spanish) of the user interface to your preferred language. This setting will be retained after closing the program.
- **Tools → Options...** This opens the option window. Settings see chapter options windows.
- **? -->** Information, Software registration

11 RECORDING OF EXPORT AND IMPORT PROCESSES IN A LOG FILE.

During export and import a LOG file is generated and saved in the current directory ("export.log" / "import.log"). The LOG file contains information about the process and errors that may have occurred.



- You should check the LOG files after each export and import.
- The LOG file can be opened with any common text editor.

12 LINE/WORD COUNT

Sysfilter offers the following possibilities of text count:

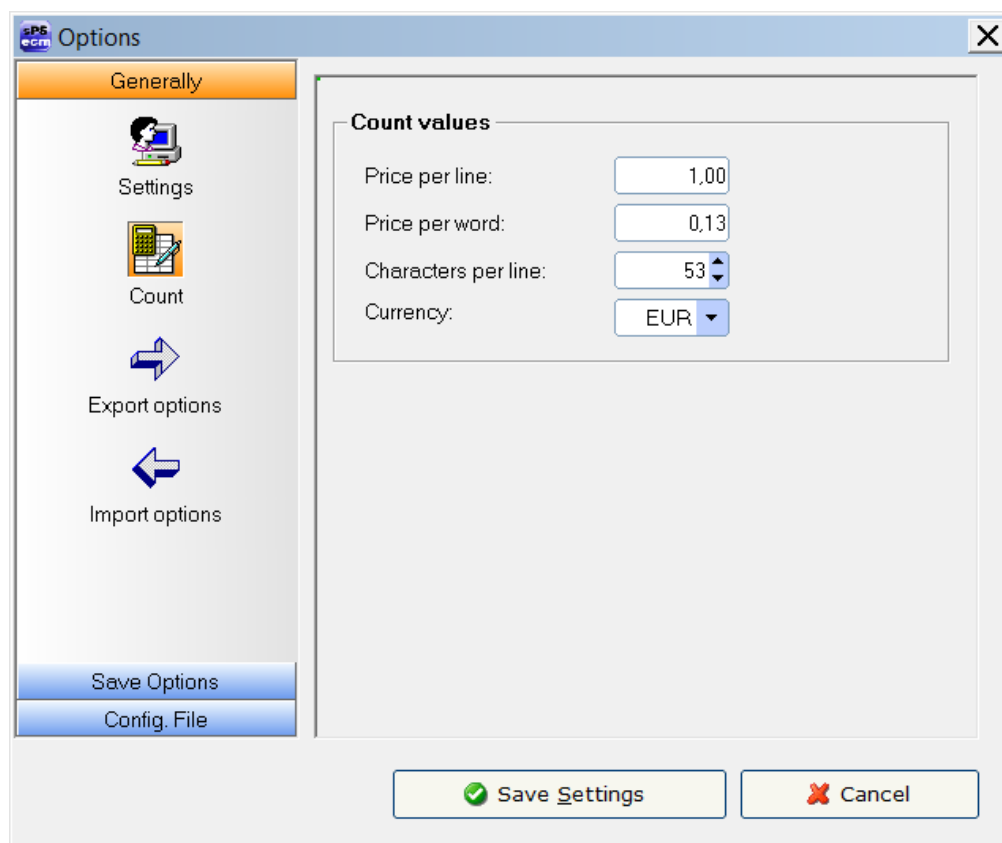
- a) Sysfilter count and calculation function for text count and price calculation.
- b) Generation of a count file without tags, which you can count with your usual counting tool.

12.1 SYLFILTER TEXT COUNT AND CALCULATION FUNCTION

Import and export process are documented in a LOG file. The log file contains information about import and export process as well as **line count**, **word count** and translation **price calculation**. Sometimes you might have found it difficult to calculate the translation price of a project including Adobe Photoshop files. The Sysfilter count and calculation function enables you to **calculate the translation price during a simple export/import process**. A plain export/import function provides you with a basis for your quotation costing.

To use the Sysfilter count and calculation functions please proceed as follows. Go to the main menu and click on **Tools --> Options... --> Count**. The following screen will be displayed.

Option window "Count"



Modify the settings of word count and price calculation according to your needs.

During export/import the counting and calculation information is written into the LOG file. To view the LOG file click onto "Show LOG file". The LOG file contains information about the export process, the total character number, the number of lines (53 characters per line) and number of words.

The LOG file ("export.log/import.log") is saved in the same folder as the Photoshop files. If you want to save the LOG file into a different directory, proceed as follows:
Click on "Show log file" after the export/import is completed. Then click right mouse button. A file saving dialog will be displayed. The LOG file can be opened with any common text editor.

And that's what a Sysfilter LOG file looks like:

```
Sysfilter for Photoshop CS-CS6 Version: 3.0.1 - Build 1
12.04.2013 --- 08:59:18

Option: Export
Output format of export file: DOC
Option: Export hidden text

1 File(s) selected

Photoshop started - Version: 13.0.0
Output format of export file: DOC
*****

exporting button_history.psd
Target folder: s:\_checks\ps\buttons\
...

*****
                        Statistics
*****
Chars Total:
                        45

Total lines: (53 Characters) -----
                        0,85

Total words: -----
                        5

Number of text frames: -----
                        5

Frames with numbers / characters / percent:
                        0 / 0 / 0 %

Number of files: -----
                        1

Total (lines) in EUR: -----
                        0,85

Total (words) in EUR: -----
                        0,65

*****

12.04.2013 --- 08:59:32
```


13 TIPS AND TRICKS

13.1 NOTES ON LAYOUT WORKS / DTP:

Due to the automation of text export and import Sysfilter Tools significantly reduce pre- and post-translation formatting and layout expenses and thus help you to save a lot of time and money during translation process. **Nonetheless you should consider, that automated filter processes require layout control and, depending on the file structure, post layout. Especially for very complex files, we recommend that you test the suitability of Sysfilter Tools.** Please don't hesitate to request a free test version (info@sysfilter.de).

13.2 LAYERS

Some Photoshop documents are structured so that the layer function of Photoshop is used to manage multiple language versions in a single document.

You have the following possibilities for such documents using Sysfilter for Photoshop ®:

13.2.1 SELECTIVE TEXT EXPORT OF A LAYER

1. In the "Export" tab check the box **"Only text from this layer" or "Only text from this layer set"**.
2. A text box will appear where you enter the name of the layer to be exported or select the layer name from the pick list. The list permits to store layer names permanently and to retrieve them.
3. Make further settings according your needs and click on **"Export Text"**.

---> The exported files contain the text of the selected layer.

Import: The import function imports the texts automatically into the correct text frames.

14 PROOFREADING / CREATE PDF FILES

You can automatically create PDF files of the Photoshop files during the export or import process. Just activate the applicable check box under Export Options or Import Options.



The PDF files can be used as reference material for translation, proofreading or layout control.

15 INSTRUCTIONS COMMAND LINE MODE (CL MODE)

The new command line function enables you to start Sysfilter by a batch-file or via command line or from other programs.

By this means all export and import tasks can be accomplished automatically or at a designated moment for example on a server.

Basics:

1. To shorten the path information the Sysfilter application the path can be added to the system path.

Default application path:

"C:\Program Files (x86)\ecm\Sysfilter\PhotoSys-CS\PhotoSys-CS.exe"

--> Sysfilter can be started using the command line calling only the application name ("PhotoSys-CS.exe "):



To start more than 3 instances at the same time, or to run the filter on a server a server license is required.

15.1 COMMANDS

15.1.1 COMMANDS FOR THE EXPORT PROCESS TO XML, DOC, DOCX OR RTF:

XML export:

```
PhotoSys-CS /c:\path /exp /xml
```

DOC export:

```
PhotoSys-CS /c:\path /exp /doc
```

DOCX export:

```
PhotoSys-CS /c:\path /exp /docx
```

RTF export:

```
PhotoSys-CS /c:\path /exp /rtf
```

Parameters:

"/c:\path" - any folder, containing the PSD files

"/exp" - files will be exported

"/xml", "/doc", "/docx" or "/rtf" - export format

"/conf d:\path" -[optional: path to an external config file]

Other export options depend on the settings in the 'config.xml' file.

15.1.2 COMMANDS CONCERNING THE IMPORT PROCESS:

XML import:

```
PhotoSys-CS /c:\path /imp /xml
```

DOC import:

```
PhotoSys-CS /c:\path /imp /doc
```

DOCX import:

```
PhotoSys-CS /c:\path /imp /docx
```

RTF import:

```
PhotoSys-CS /c:\path /imp /rtf
```

Parameters:

"/c:\path" - any folder, containing the translated files
"/imp" - files will be imported
"/xml", "/doc", "/docx" or "/rtf" - Import format
"/conf d:\path" -[optional: path to an external config file]

Other import options depend on the settings in the 'config.xml' file.

15.1.3 COMMANDS CONCERNING THE CONCATENATION PROCESS

XML concatenation:

```
PhotoSys-CS /c:\path /cat /xml
```

DOC concatenation:

```
PhotoSys-CS/c:\path /cat /DOC
```

DOCX concatenation:

```
PhotoSys-CS/c:\path /cat /DOCX
```

RTF concatenation:

```
PhotoSys-CS/c:\path /cat /rtf
```

Parameters:

"/c:\path" - any folder, containing the files
"/cat" - files will be concatenated
"/xml", "/doc", "/docx" or "/rtf" - file format
"/conf d:\path" -[optional: path to an external config file]

A subfolder will be created named Syscat (Example "c:\path\SYSCAT"). The file name of the concatenated file is generated automatically and depends on the folder name.

Other options depend on the settings in the 'config.xml' file.

15.1.4 COMMANDS CONCERNING THE SPLITTING PROCESS

XML splitting process:

```
PhotoSys-CS /c:\path /split /xml
```

DOC splitting process:

```
PhotoSys-CS/c:\path /split /doc
```

DOCX splitting process:

```
PhotoSys-CS/c:\path /split /docx
```

RTF splitting process:

```
PhotoSys-CS/c:\path /split /rtf
```

Parameters:
"/c:\path" - any folder, containing the concatenated files
"/split" - files will be split
"/xml", "/doc", "/docx" or "/rtf" - file format
"/conf d:\path" -[optional: path to an external config file]

Other options depend on the settings in the 'config.xml' file.

15.1.5 PDF CREATION (TAB: "PDFS")

PDF actions:

```
PhotoSys-CS /c:\path /pdfs
```

Parameters:
"/c:\path" - any folder, containing the PSD files
"/pdfs" - PDF creation: Options of the "PDFs" tab are activated. Other options depend on the settings in the 'config.xml' file.
"/conf d:\path" -[optional: path to an external config file]

15.1.6 SYSTEM TRAY - COMMAND LINE MODE

When starting the filter via command line a small traffic light is displayed in the system tray. This indicates that the Sysfilter runs in the background. When the traffic light is clicked more options appear.

15.1.1.7 SAMPLE FILES / BATCH, CMD FILES

1. Start-SYS-BatchMode.cmd: This kind of batch files calls Sysfilter one by one and will perform different tasks.

Sample:

```
@Echo Off
Goto after
Rem #####
Rem #
Rem #                               Start process in batch mode
Rem #
Rem # Description:      1- Starts Sysfilter for Photoshop by the dos prompt
Rem # -----          (Change the paths according your system)
Rem #
Rem #                  Copyright by Polmann Services
Rem #                  All rights reserved.- File for free use.
Rem #
Rem #####
:after

@Echo On

Rem Task: Sample 1: Text Export PSD2XML

Call "c:\YourApplicationPath\PhotoSys-CS.exe" /e:\YourSamplePath\sample1\ /exp /xml /conf
e:\YourSamplePath\sample1\config1.xml

Rem Task: Sample 2: Text Export PSD2DOCX

Call "c:\YourApplicationPath\PhotoSys-CS.exe" /e:\YourSamplePath\sample2\ /pdfs /conf
e:\YourSamplePath\sample2\config2.xml
```

2. Start-SYS-ParallelTasks.cmd: This batch file will execute multiple instances of Sysfilter and will perform different tasks.

Sample:

```
@Echo Off
Goto after
Rem #####
Rem #
Rem #
Rem #
Rem # Description:      1- Starts Sysfilter for Photoshop by the dos prompt
Rem # -----          (Change the paths according your system)
Rem #
Rem #                  Copyright by Polmann Services
Rem #                  All rights reserved.- File for free use.
Rem #
Rem #####
:after

@Echo On

Rem Sample1: Export psd2xml
Start c:\YourApplicationPath\PhotoSys-CS.exe /e:\YourSamplePath\sample1\ /exp /xml /conf
e:\YourSamplePath\sample1\config1.xml

Rem Sample2: Export psd2docx
Start c:\YourApplicationPath\PhotoSys-CS.exe /e:\YourSamplePath\sample2\ /exp /docx /conf
e:\YourSamplePath\sample2\config2.xml

Rem Sample3: Import xml2psd
Start c:\YourApplicationPath\PhotoSys-CS.exe /e:\YourSamplePath\sample3\ /imp /xml

Rem Sample4: Import docx2psd
Start c:\YourApplicationPath\PhotoSys-CS.exe /e:\YourSamplePath\sample4\ /imp /docx

Rem Sample6: PDF creation
Start c:\YourApplicationPath\PhotoSys-CS.exe /e:\YourSamplePath\sample6\ /pdfs /conf
e:\YourSamplePath\sample6\config6.xml
```



To see the results check the folders and log files.



Only use the Photoshop 32 bit versions for parallel tasks.



Further information about using batch files can be found on the following Microsoft page:
<http://www.microsoft.com/resources/documentation/windows/xp/all/proddocs/en-us/batch.msp?mfr=true>

15.2 CHANGING THE CONFIG.XML FILE

The Sysfilter settings are stored in the "Config.XML" file. This configuration file is a XML file that is stored in UTF8 format. It is located by default in the **application path** of the filter or in the **"Document" folder of your system under "Sysfilter"**.

There are 2 ways to alter the configuration file.

15.2.1 MODIFICATION USING THE SYSFILTER USER INTERFACE

The user interface of Sysfilter permits to modify and save the settings of the configuration file:

How to proceed:

1. Change desired options in the tools area or in the tabs of the main view.
2. Menu item: Select "Tools" --> "Options...".
3. Click on "Save Settings".



The setting of the main view will be retained after closing the program.

15.2.2 ALTERING THE CONFIGURATION FILE MANUALLY

How to proceed: Open the corresponding config.xml using a text editor and edit the entries.

15.2.3 DEFAULT SETTINGS

To restore the standard settings, click on "Reset settings to default". (Menu item: Tools --> Options...--> Configuration)

<TAG>Value</TAG>	Values / Description
<?xml version="1.0" encoding="UTF-8" ?>	XML Header
<AICS2Config>	Start Tag
<Application>Sysfilter for Photoshop CS/CC - Config-File</Application>	Version Information
<ApplicationVers>8</ApplicationVers>	<p>- Check the Photoshop version installed on your PC!</p> <p>Settings of the configuration file:</p> <p><ApplicationVers>0</ApplicationVers></p> <p>--> 0 stands for Photoshop CC 2019, --> 3 stands for Photoshop CC 2017, --> 4 stands for Photoshop CC 2015.5, --> 5 stands for Photoshop CC 2015 --> 6 stands for Photoshop CC 2014, --> 5 stands for Photoshop CC, --> 7 stands for Photoshop CS6, --> 8 stands for Photoshop CS5.1, --> 9 stands for Photoshop CS5,</p>

<TAG>Value</TAG>	Values / Description
	--> 10 stands for Photoshop CS4, --> 11 stands for Photoshop CS3 --> 12 stands for Photoshop CS2...
<ConfigPath />	No function
<Startsettings>*.psd</Startsettings>	Start settings for file selection: "*.psd"
<systemPhotoshopWaitingTime />	Command line mode: waiting time until Photoshop will be started. Default settings (ms): 15000
<OptionsGenchkStart>1</OptionsGenchkStart>	0 = No action (default) 1 = don't close Photoshop no function in command line mode
<OptionsVersion>0</OptionsVersion>	No function
<ExportCreatePDF>0</ExportCreatePDF>	0 = No action (default) 1 = PDF-Datei wird erstellt (Export)
<ExportVisible>1</ExportVisible>	0 = No action 1 = export hidden text
<CreateDok>0</CreateDok>	0 = No action (default) 1 = Create global PDF
<ExportLayer>0</ExportLayer>	0 = No action 1 = Only text from this layer
<ExportSetLayerName>0</ExportSetLayerName>	0 = No action 1 = Only text from this layer set
<ExportLayerName />	layer name
<ImportRenameLayer>0</ImportRenameLayer>	Import: 0 = No action (default) 1 = rename layer
<ImportRenameLayerSource />	Layer name
<ImportRenameLayerTarget />	Layer name
<ImportCreatePDF>0</ImportCreatePDF>	0 = No action (default) 1 = Create PDF / Import
<ImportCreateDokSourceTarget>0</ImportCreateDokSourceTarget>	0 = No action (default) 1 = Create source/target Lang. PDF
<LayersRenameLayer>0</LayersRenameLayer>	No function
<LayersRenameLayerSource />	No function
<LayersRenameLayerTarget />	No function
<LayersDeleteLayer>0</LayersDeleteLayer>	No function
<LayersDeleteName />	No function
<qmchecksfonts>0</qmchecksfonts>	No function
<qmcheckstext>0</qmcheckstext>	No function
<qmchecksoverridden>0</qmchecksoverridden>	No function
<DoksCreatePDF>0</DoksCreatePDF>	0 = No action (default) 1 = Create PDF (Tab: PDFs)
<DoksCreateDokSourceTarget>0</DoksCreateDokSourceTarget>	0 = No action (default) 1 = Create source/target Lang. (Tab: PDFs)
<DoksCreateDokPath />	Path: Target files
<OptionExpFormat>1</OptionExpFormat>	Export settings
<syskonkat>1</syskonkat>	Concatenation: 0-Concat. docx 1- Concat. doc 2- Concat. rtf 3- Concat. XML 4- Split docx, doc, rtf, xml 5-Split xml
<OptionsPriceLine>1</OptionsPriceLine>	Price options
<OptionsPriceWord>0,13</OptionsPriceWord>	Price options
<OptionsPriceCharsPerLine>53</OptionsPriceCharsPerLine>	Price options
<OptionsPriceCurrency>EUR</OptionsPriceCurrency>	Price options
<OptExpSettingsSprNeutrLayers>0</OptExpSettingsSprNeutrLayers>	No function
<OptExpSettingssprNeutr0>0</OptExpSettingssprNeutr0>	No function
<OptExpSettingssprNeutr1>0</OptExpSettingssprNeutr1>	No function
<OptExpSettingssprNeutr2>0</OptExpSettingssprNeutr2>	No function
<OptExpSettingsTsprNeutrText0 />	No function
<OptExpSettingsTsprNeutrText1 />	No function
<OptExpSettingsTsprNeutrText2 />	No function
<OptExpdv>0</OptExpdv>	No function
<OptExpcountfile>0</OptExpcountfile>	0 = No action (default) 1 = Texts without Tags (only when using Microsoft Word))
<OptionsImpchkLayerImp>0</OptionsImpchkLayerImp>	No function
<OptionsImpchkLayerImpDel>0</OptionsImpchkLayerImpDel>	No function
<OptionsImpTextLayerDel />	No function
<OptionsImpsevLayerp0>0</OptionsImpsevLayerp0>	No function

<TAG>Value</TAG>	Values / Description
<OptionsImpsevLayerp1>0</OptionsImpsevLayerp1>	No function
<OptionsImpsevLayerp2>0</OptionsImpsevLayerp2>	No function
<OptionsImpsevLayerp3>0</OptionsImpsevLayerp3>	No function
<OptionsImpsevLayerp4>0</OptionsImpsevLayerp4>	No function
<OptionsImpsevLayerImpText0 />	No function
<OptionsImpsevLayerImpText1 />	No function
<OptionsImpsevLayerImpText2 />	No function
<OptionsImpsevLayerImpText3 />	No function
<OptionsImpsevLayerImpText4 />	No function
<OptionsImpchkLayerDel2>0</OptionsImpchkLayerDel2>	No function
<OptionsImpTextLayerDel2 />	No function
<OptionsGenOptTXC>True</OptionsGenOptTXC>	No function
<OptionsGenOptXML>False</OptionsGenOptXML>	No function
<OptionsGenOptMSWord>False</OptionsGenOptMSWord>	No function
<OptionsGenchkGesDok>1</OptionsGenchkGesDok>	No function
<OptionsGenchkGesPDF>0</OptionsGenchkGesPDF>	No function
<OptionsgesPDFs>120</OptionsgesPDFs>	Images per PDF file max.:
<OptionsgesASZSPDFs>60</OptionsgesASZSPDFs>	Pairs source/target language per PDF max:
<OptionsFontCheck>0</OptionsFontCheck>	0 = No action (default) 1 = Replace fonts in Photoshop with...
<OptionsFont>ArialUnicodeMS</OptionsFont>	Font name
<OptionsCHK64Bit>0</OptionsCHK64Bit>	0 = No action (default) 1 = activate use of Photoshop 64 bit version
<Options64BitApplPath>...Photoshop.exe </Options64BitApplPath />	Path to 64 bit version
<MainSubfolder>0</MainSubfolder>	---
<OptionsSubFoldCHK1>0</OptionsSubFoldCHK1>	1 = Browse subfolders
<OptionsSubFoldCHK2>1</OptionsSubFoldCHK2>	0 = Only main folder (default)
</AICS2Config>	Closing Tag

15.2.4 CONFIGURATION FILE IN COMMAND LINE MODE

If the CONFIG file is not specified in the command line, the default CONFIG file is loaded.

15.3 RUNNING SERVER TASKS

15.3.1 CONCERNING SYSFILTER

- There should be a time interval between calling the Sysfilter programs. About 3 to 5 seconds should be enough.

15.3.2 CONCERNING PHOTOSHOP

- Running different Photoshop versions at the same time could cause problems. So only tasks for the same Photoshop version should be started.

- Some folders of the latest task are blocked by Photoshop until Photoshop has quitted. Recommendation: Quit the Photoshop.exe if there is no Sysfilter instance running. Sysfilter can't close the Photoshop.exe to avoid interrupting other parallel tasks.

16 TECHNICAL SUPPORT

You will be provided with free support in our support forum on our website under → <http://www.sysfilter.de>.

Detailed information, sample files or screen shots especially the log file will help us process your request more quickly and accurately.

Please make sure to include the following information:

Operating system:

Photoshop Version:

This will make it easier for us to respond to your request.

Use the following e-mail address to get in touch with our support.

e-mail: <mailto:support@sysfilter.de>



If you have any problems or questions concerning Sysfilter please first check this user guide or our support forum for help.



Time-critical support requests cannot be answered under our free support.

17 TRAINING

We will be glad to train you or your staff members. On site in your company or via the Internet by means of online sessions at your workplace. Inquire about our trainings – we will advise you.

18 NEW FEATURES

Sysfilter is continuously updated based on our tests and your suggestions. If you are already a customer, it will pay off for you to download the updated Sysfilter versions from our [Download Centre](#) on a regular basis smaller updates are available free of charge.

19 CONTACT

POLMANN SERVICES
www.polmannservices.com

Area of Software and Systems Engineering

Phone: 0049-(0) 8292 – 951 24 22
E-Mail: <mailto:info@polmannservices.com>

Polmann Services
Jorge Polmann
Zusamstr. 12
86424 Dinkelscherben

20 COPYRIGHT / TRADEMARKS

Copying and publication of this document is expressly prohibited without prior written consent by Polmann Services – J. Polmann. This information may be subject to changes or updates without specific notice

Adobe, Acrobat, Photoshop, InDesign and Photoshop are registered trademark of Adobe Systems Incorporated.

All other trademarks (Microsoft, Visio, CorelDraw, Excel, SDL Trados, Déjà Vu Atril, Wordfast, Across, Transit) are the property of their respective owners.